

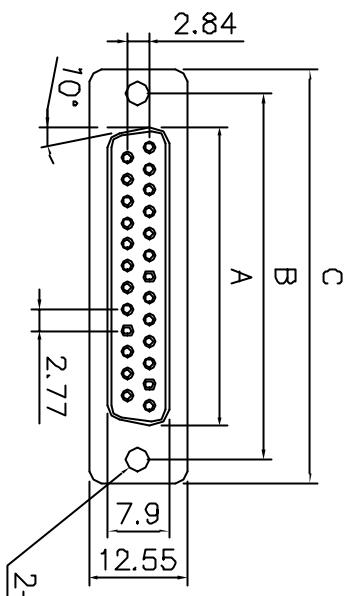
This document is the property of Amphenol Corporation and is delivered on the express condition that it is not to be disclosed, reproduced or used, in whole or in part, for the manufacture or sale by anyone other than Amphenol Corporation without its prior consent, and that no right is granted in whole or in part to use any trademark in this document.

# D-SUB CRIMP TYPE

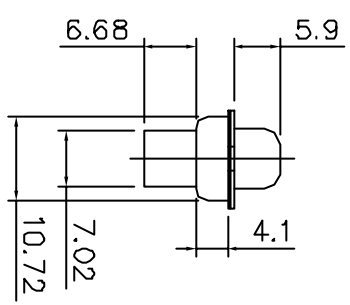
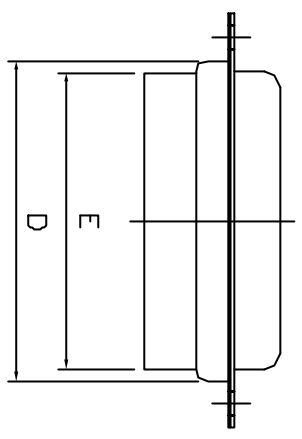
## Specifications

- Contact Resistance:  $\leq 30m$  max. at DC 100mA
- Insulator Resistance: 1000M min. at DC 500V
- Current Rating: 5 AMP
- Dielectric Withstanding Voltage: AC 1000V For 1 minute
- Operating Temperature:  $-55^{\circ}C \sim +105^{\circ}C$
- Housing: PBT & 30% Glass Fiber (UL 94V-0)
- Shells : Brass
- Plating : pure Tin over Nickel

ROHS compliant  
MSL components : level 3



2- $\phi$ 3.05 Clear hole



L177RR - - S

Shell size

Nber of cts

- E = 09 ways
  - A = 15 ways
  - B = 25 ways
  - C = 37 ways
- 09-15-25-37

## Dimension

cavities	A	B	C	D	E
9	16.33	24.99	30.81	19.20	15.45
15	24.99	33.32	39.14	27.70	24.45
25	38.38	47.04	53.04	41.10	38.00
37	54.84	63.50	69.32	57.30	53.96

TOLERANCE	APPROVALS	DATE	TITLE
X, 0.05	DRMAN C.R	14/11/01	RR SERIES D-SUB CONNECTOR CRIMP VERSION PLUG
X,X 0.1	DESIGNED J.F.L	14/11/01	AMPHENOL SOCAPEX Dole Plant
X,XX 0.3	APPROVED J.F.L	14/11/01	
UNLESS OTHERWISE SPECIFIED		UNIT: MM	SCALE: DRAWING N° L177RR - - S
			SHEET: A4 REV: A